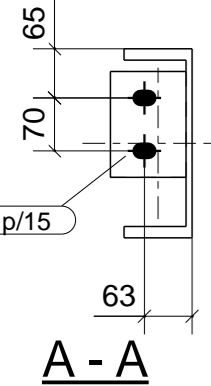
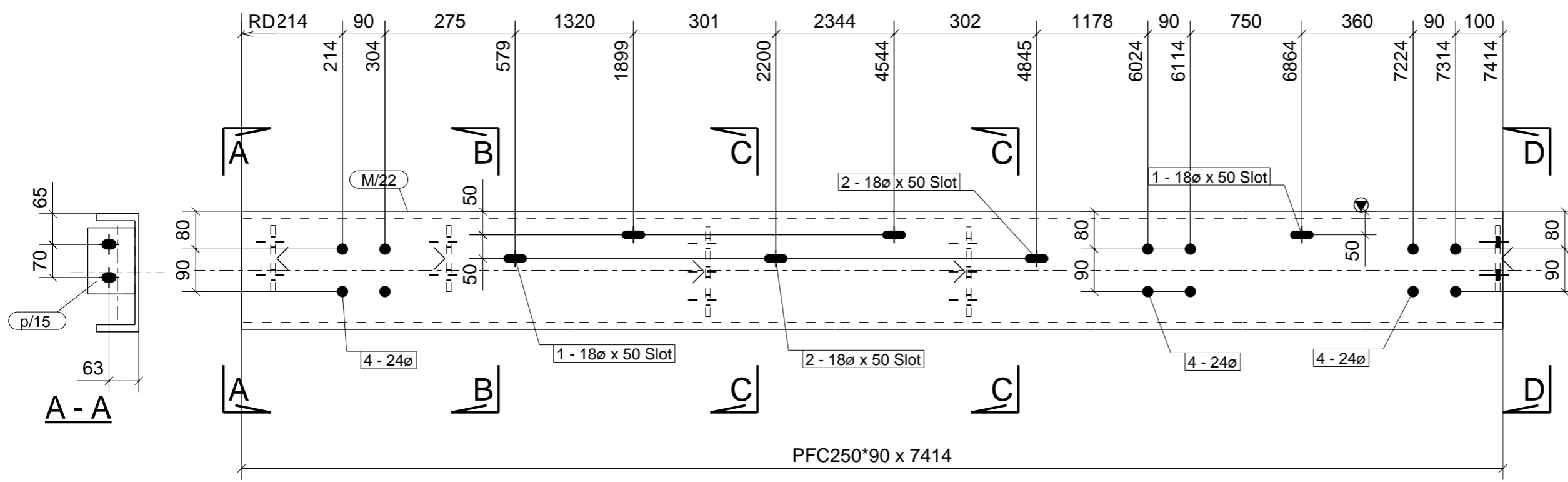
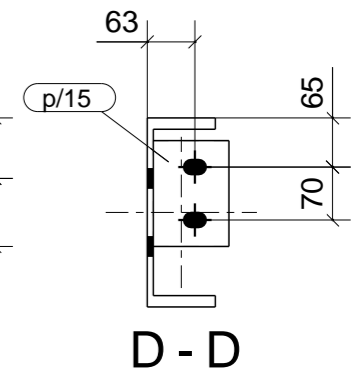
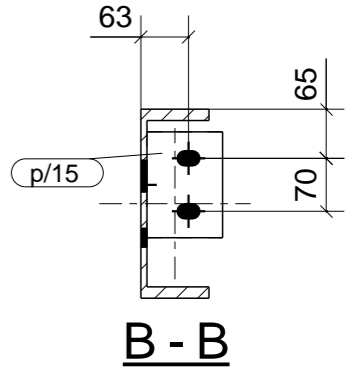
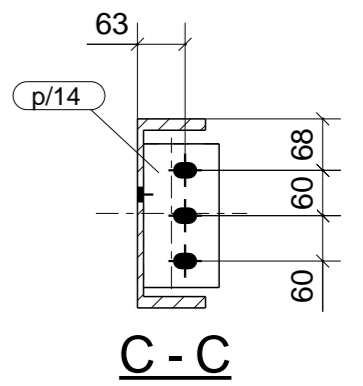
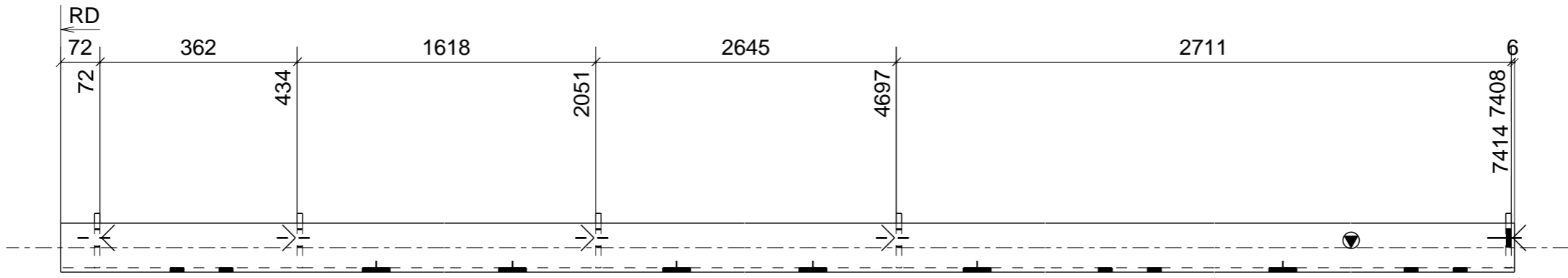


- LEGEND:
- Denotes orientation mark for erection
 - < Denotes position of connecting steel beam relative to cleat plate
 - 6△ Denotes (6mm thick) fillet weld all around
 - Y Denotes full strength butt weld all around
 - Y Denotes prepare end for FSBW on site
 - FSBW Full Strength Butt Weld
 - 6CFW (6mm thick) Continuous fillet weld
 - N/S Near Side
 - F/S Far Side
 - B/S Both Sides



1 BEAM[S] REQ'D AS DRAWN MK RB5-A
Finish - H.D. GALV.

DATE	TIME
FABRICATOR	
O/A/LENGTH	
HAND?	
QTY	
FINISH	

FABRICATION ISSUE